

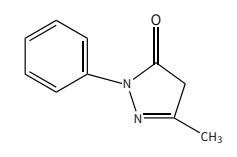


Edaravone

Edaravone and Dexborneol Concentrated Solution for Injection
Yidalafeng Youkanchun Zhushheyong Nongrongye

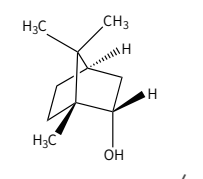
1 3- -1- -2- -5-

$C_{10}H_{10}N_2O$
174.20



2 (1R,2S,4R)-1,7,7- [2.2.1] -2-

$C_{10}H_{18}O$
154.25



pH

5ml 10mg 2.5mg

2 14 100ml 48 30mg 7.5mg

III 2.9 2

37.5mg/ 26.98 1 28

13.7% 82 12 2.0% >1% 28 4.7%

1. 0.1% - 1.0% : 2.7%

2. 1.2% CYP450

3. 1.0% UGT CYP

4. 0.8%

5. 0.7%
6. 0.5%
7. 0.5%
8. 0.3%
9. 0.3%
10. 0.3%
11. 0.3%
12. 0.2%
13. 0.2%
14. 0.2%
8.0%

1.
2.
3.
4.

1. 6.25-25mg/kg/day
2.9 -
2

80

CYP450

UGT
CYP

UGT

1.
2.
3.
4.
5.

F1

15mg/3.75mg-60mg/15mg

30mg/7.5mg
23.4L 500 5000 50000ng/mL
76% 73% 64%

120mg/ 30mg 2 60mg/
15mg 5

SIM-23-02 45
III n=1194 n=599

30mg 48 14 37.5mg 3.2h

90 mRS 1 65.44%
57.65% 7.79% 95% CI 2.29%,13.30%
P=0.0056 14 30 90

NIHSS -3.01 -3.22 -4.08
-2.60 -2.85 -3.80

14 30 90 NIHSS
-0.42 95% CI -0.73--0.10 P=0.0097 -0.39
95% CI -0.72--0.07 P=0.0147 -0.33 95% CI -0.64--0.01
P=0.0359 SIM-23-02

37.5mg 24h
82%
4.17% 63%
t_{1/2} 2.1h
t_{1/2} 2.0h

24

YBH02562020

H20200007

210032 99

210032 99

025-58286999
025-58285555
www.simcere.com

8008289800
4008877552

Ames

2 6 4
6.25 12.5 25mg/kg 25mg/kg

6 15
6.25 12.5 25mg/kg 25mg/kg

6 18
2.5 5 10mg/kg

6 21
6.25 12.5 25mg/kg FO



P21640503